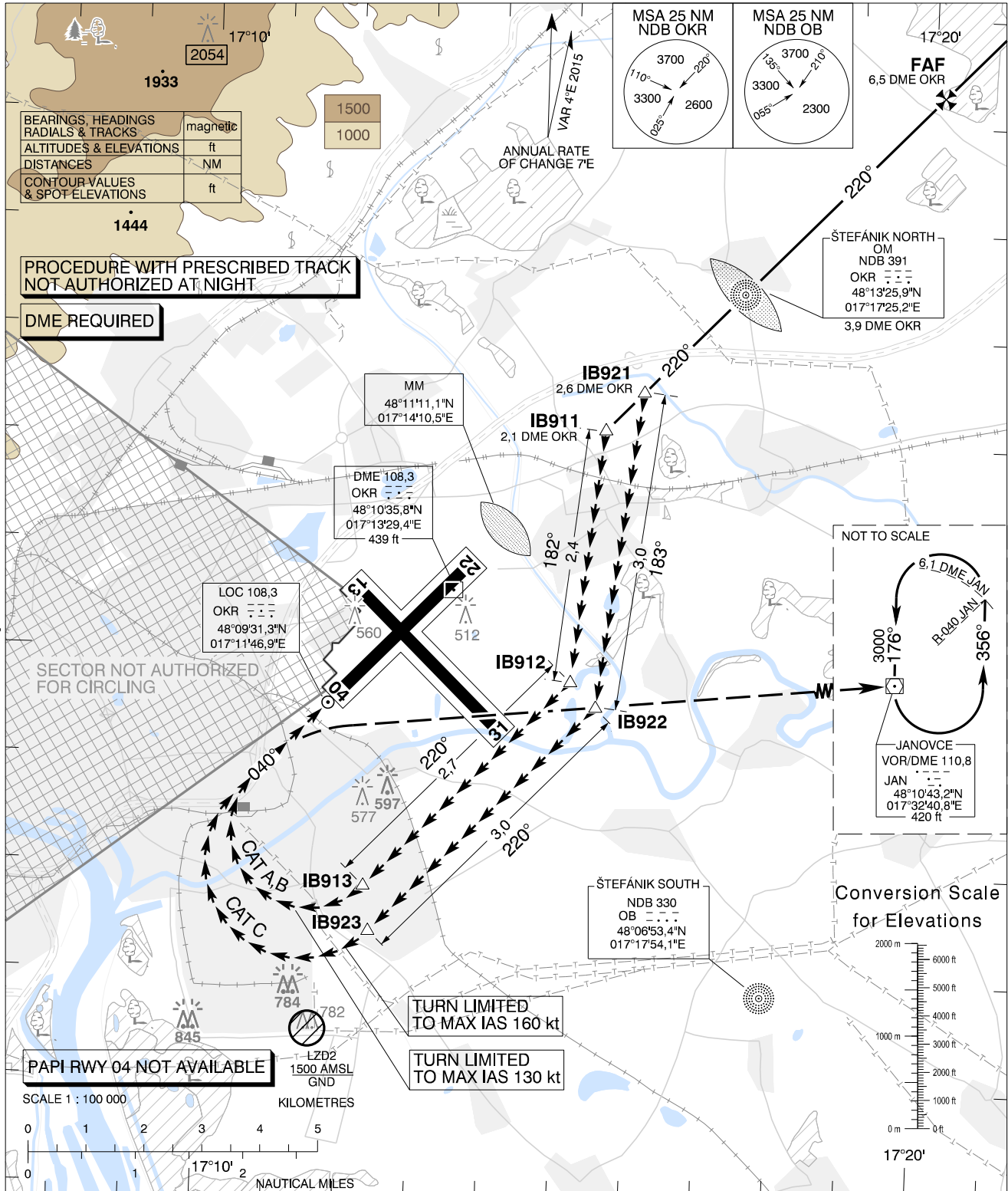


CIRCLING
APPROACH
CHART

TRANSITION ALTITUDE
10 000 ft
AD ELEV 436 - 16 hPa
THR RWY 04 ELEV 436 - 16 hPa

ŠTEFÁNIK RADAR 134,925 (118,975)
ŠTEFÁNIK TOWER 118,300 (118,700)
ŠTEFÁNIK ATIS ARRIVAL 133,880

BRATISLAVA/M. R. ŠTEFÁNIK
LZIB CIRCLING
RWY 22 → 04



MISSED APPROACH

Proceed with RIGHT turn to VOR JAN climbing to 3000 AMSL and join holding.
MAX IAS as prescribed for relevant ACFT CAT until established on track to VOR JAN.

PROCEDURE

Execute a published instrument approach procedure to circling OCA(H) for relevant ACFT CAT, proceed VISUALLY approximately onto tracks and distances given on the chart above.

WARNING

In case of missed approach before leaving final approach track, follow instrument missed approach procedure for RWY 22.

OCA (OCH)	A	B	C	D
WITHOUT PRESCRIBED TRACK	ft 900 (464)	1000 (564)	1970 (1534)	2450 (2014)
WITH PRESCRIBED TRACK	ft 1080 (644)	1240 (804)	—	—
MNM VISIBILITY	m 1900	2800	3700	4600

	IB911	IB912	IB913
CAT A, B	48°12'07,6"N 017°15'32,1"E	48°09'46,4"N 017°15'08,7"E	48°07'49,7"N 017°12'20,7"E
	11,6 DME JAN R-273 JAN	11,8 DME JAN R-261 JAN	13,9 DME JAN R-254 JAN
CAT C	48°12'29,3"N 017°16'03,4"E	48°09'32,5"N 017°15'30,2"E	48°07'24,5"N 017°12'25,9"E
	11,3 DME JAN R-275 JAN	11,6 DME JAN R-260 JAN	14,0 DME JAN R-252 JAN

CHANGES: MAG VAR, flight procedures adjustment, ATIS FREQ