

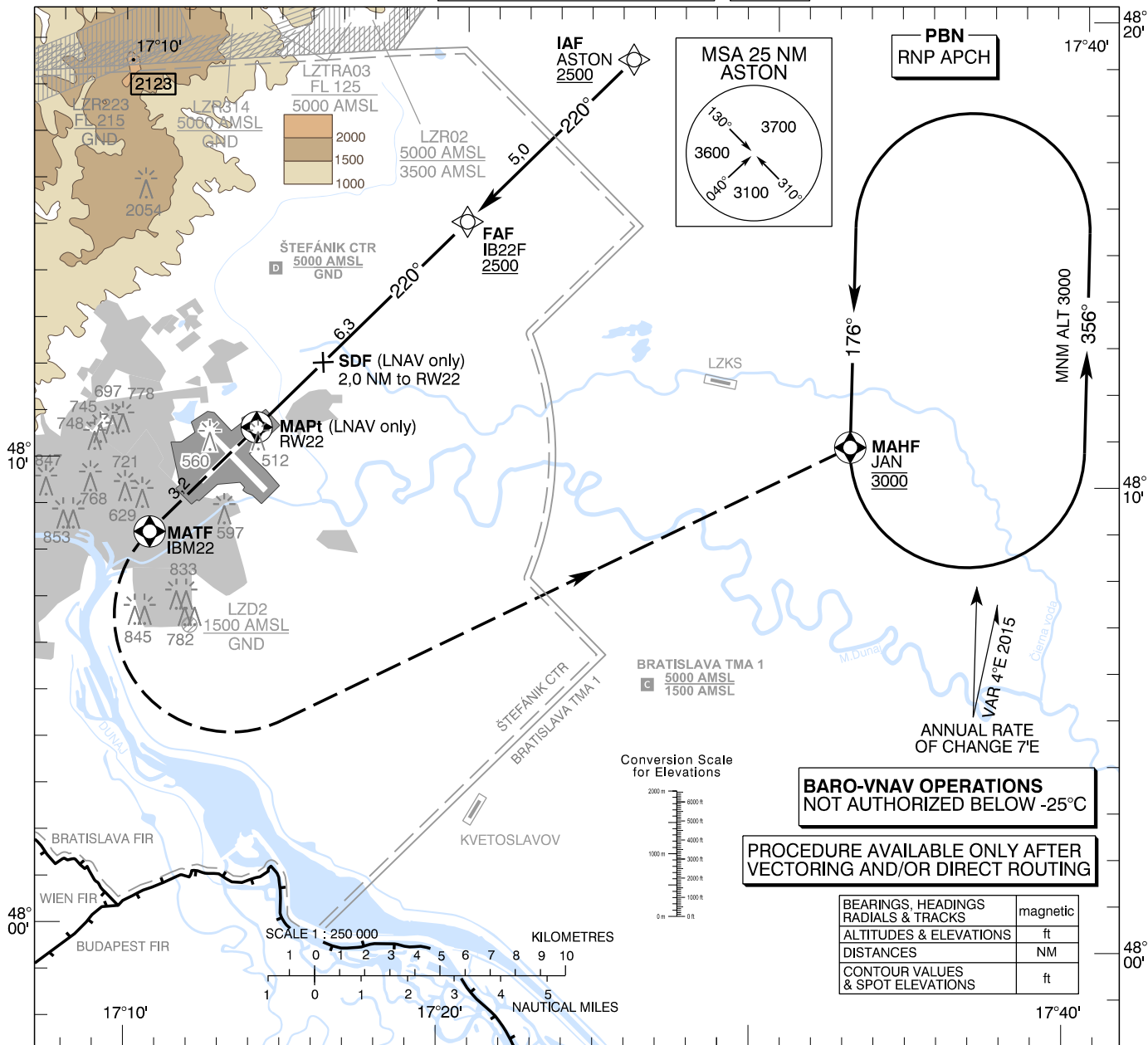
**INSTRUMENT
APPROACH
CHART - ICAO**

TRANSITION ALTITUDE
10 000 ft
AD ELEV 436 - 16 hPa
THR RWY 22 ELEV 430,1 - 16 hPa

ŠTEFÁNIK RADAR 134,925 (118,975)
ŠTEFÁNIK TOWER 118,300 (118,700)
ŠTEFÁNIK ATIS ARRIVAL 133,880

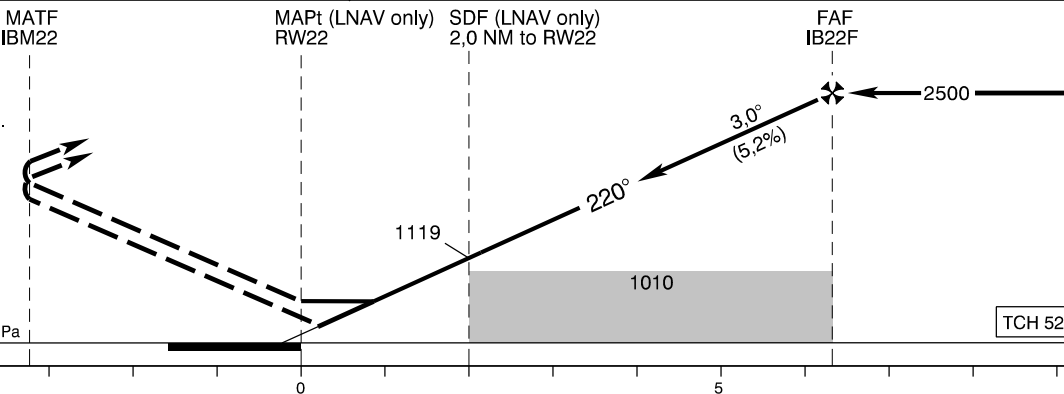
EGNOS
CH 50609
E22A

BRATISLAVA/M. R. Štefánik (LZIB)
RNP RWY 22
ACFT CAT A/B/C/D



MISSED APPROACH

MATF IBM22
Climb to IBM22, turn LEFT to JAN climbing to 3000 AMSL and hold. MAX IAS 205 kt until established on track to JAN.



THR RWY 22 ELEV 430,1 - 16 hPa
NM to/from THR RWY 22

OCA (OCH)		A	B	C	D	
Straight-in Approach	LNAV	ft	780 (344)			
	LNAV/VNAV	ft	780 (350)			
	LPV	ft	657 (227)	669 (239)	677 (247)	688 (258)
Circling		Not authorized WEST of the Airport BTN EXTD RCL 13/31 and 04/22 See the Circling Approach Chart				

Dist RW22 (THR)	NM	6.0	5.0	4.0	3.0	2.0
ALTITUDES	ft	2393	2074	1756	1437	1119

Ground speed	kt	70	90	100	120	140	160	180
IB22F - RW22 (6,3 NM)	min:sec	5:26	4:14	3:48	3:10	2:43	2:23	2:07
Rate of descent (5,2%)	ft/min	372	478	531	637	743	849	955

Timing not authorized for defining the MAPt

CHANGES: Štefánik CTR, Bratislava TMA 1 redesigned

Instrument Approach Procedure Coding Table: Bratislava/M. R. Štefánik RNP RWY 22

Path Terminator	Waypoint				Course / Track MAG (True)	DIST	Turn Direction	Constraints		Remarks
	Identifier	Type	Flyover	Coordinates				Level	Speed	
IF	ASTON	IAF	NO	48°18'55,60"N 017°25'22,39"E	-	-	-	A2500+	-	-
TF	IB22F	FAF	NO	48°15'20,09"N 017°20'10,10"E	220° (224,1°)	5,0 NM	-	A2500+	-	-
TF	RW22	MAPt	YES	48°10'46,56"N 017°13'35,27"E	220° (224,0°)	6,3 NM	-	-	-	-
TF	IBM22	MATF	YES	48°08'27,75"N 017°10'15,57"E	220° (223,9°)	3,2 NM	-	-	K205-	-
DF	JAN	MAHF	YES	48°10'43,17"N 017°32'40,75"E	-	-	LEFT	A3000	-	-
RNAV Holding										
Holding Point	Inbound Track MAG (True)	Turn Direction	MAX IAS	Minimum Holding Altitude	Time	DIST	Remarks			
JAN	176° (179,9°)	LEFT	-	A3000	1 MIN	-	-			

SBAS FAS Data Block Coding Table Bratislava/M. R. Štefánik RNP RWY 22

Input data	
Operation Type	0
SBAS Provider	1 (EGNOS)
Airport Identifier	LZIB
Runway	22
Runway Letter	0 (None)
Approach Performance Designator	0
Route Indicator	
Reference Path Data Selector	0
Reference Path Identifier	E22A
LTP/FTP Latitude	481046.5550N
LTP/FTP Longitude	0171335.2675E
LTP/FTP Ellipsoidal Height (metres)	174.7
FPAP Latitude	480938.3950N
Delta FPAP Latitude (seconds)	-68.1600
FPAP Longitude	0171157.1505E
Delta FPAP Longitude (seconds)	-98.1170
Threshold Crossing Height	15.7
TCH Units Selector	1 (meters)
Glidepath Angle (degrees)	3.00
Course Width (metres)	105.00
Length Offset (metres)	24
HAL (metres)	40.0
VAL (metres)	50.0
Output data	
Data Block	10 02 09 1A 0C 16 00 00 01 32 32 05 36 2B AD 14 47 8E 64 07 D3 1A 80 EB FD 76 01 FD 3A 81 2C 01 64 03 C8 FA EC DE F4 D5
Calculated CRC Value	ECDEF4D5
Required Additional Data	
ICAO Code	LZ
LTP/FTP Orthometric Height (metres)	131.1