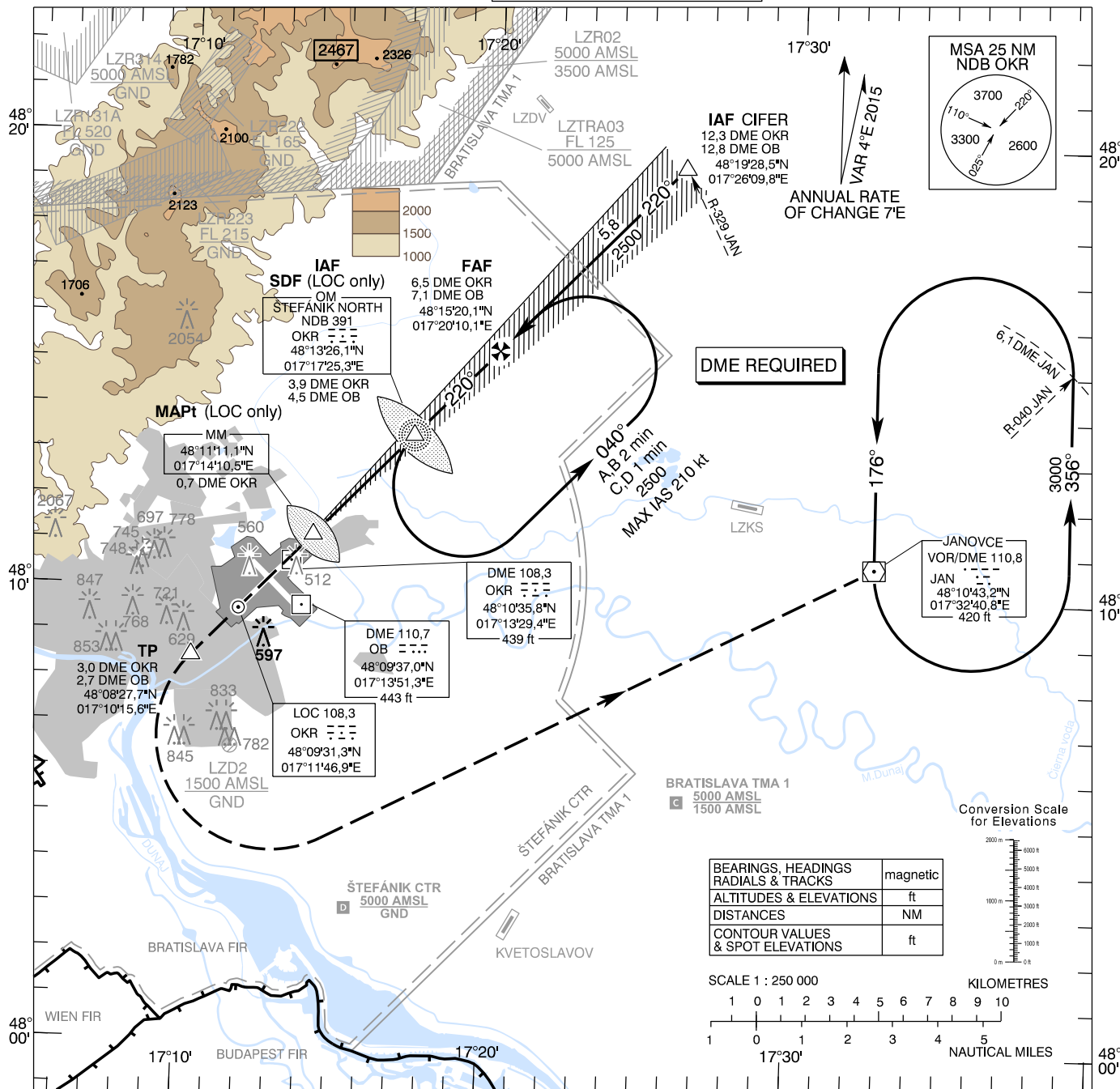


**INSTRUMENT
APPROACH
CHART - ICAO**

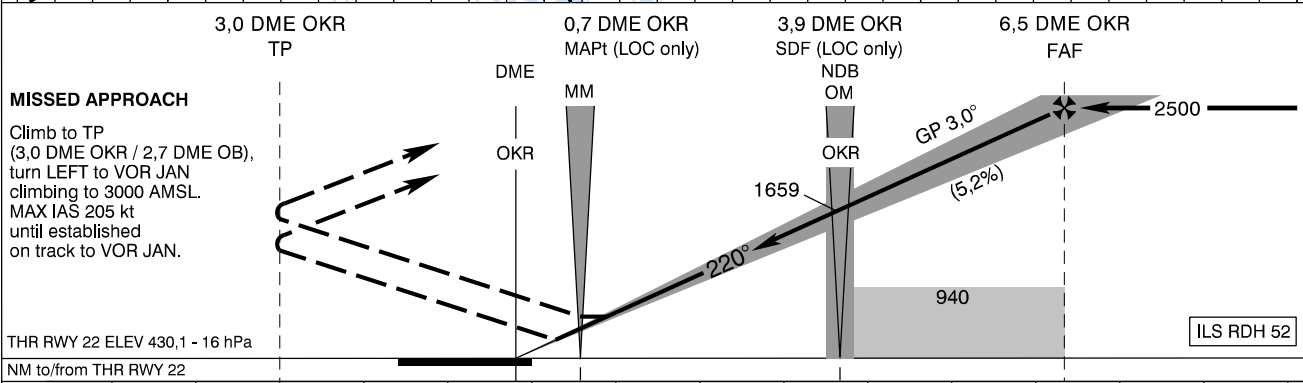
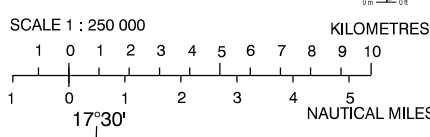
TRANSITION ALTITUDE
10 000 ft
AD ELEV 436 - 16 hPa
THR RWY 22 ELEV 430,1 - 16 hPa

ŠTEFÁNIK RADAR 134,925 (118,975)
ŠTEFÁNIK TOWER 118,300 (118,700)
ŠTEFÁNIK ATIS ARRIVAL 133,880

BRATISLAVA/M. R. Štefánik (LZIB)
ILS CAT I or LOC RWY 22
ACFT CAT A/B/C/D



BEARINGS, HEADINGS RADIALS & TRACKS	magnetic
ALTITUDES & ELEVATIONS	ft
DISTANCES	NM
CONTOUR VALUES & SPOT ELEVATIONS	ft



THR RWY 22 ELEV 430,1 - 16 hPa
NM to/from THR RWY 22

OCA (OCH)		A	B	C	D
Straight - in Approach	CAT I	ft 617 (187)	629 (199)	637 (207)	648 (218)
	LOC without SDF	ft 940 (504)			
	with SDF	ft 840 (404)			
Circling	Not authorized WEST of the Airport BTN EXTD RCL 13/31 and 04/22 See the Circling Approach Chart				

DME OKR	NM	6.0	5.0	4.0	3.0	2.0		
ALTITUDES	ft	2337	2018	1700	1381	1063		
Ground speed	kt	70	90	100	120	140	160	180
FAF - MAPt (5.8 NM)	min:sec	4:57	3:51	3:28	2:53	2:28	2:10	1:55
Rate of descent (5,2%)	ft/min	372	478	531	637	743	849	955

Timing not authorized for defining the MAPt

CHANGES: Štefánik CTR, Bratislava TMA 1 redesigned