

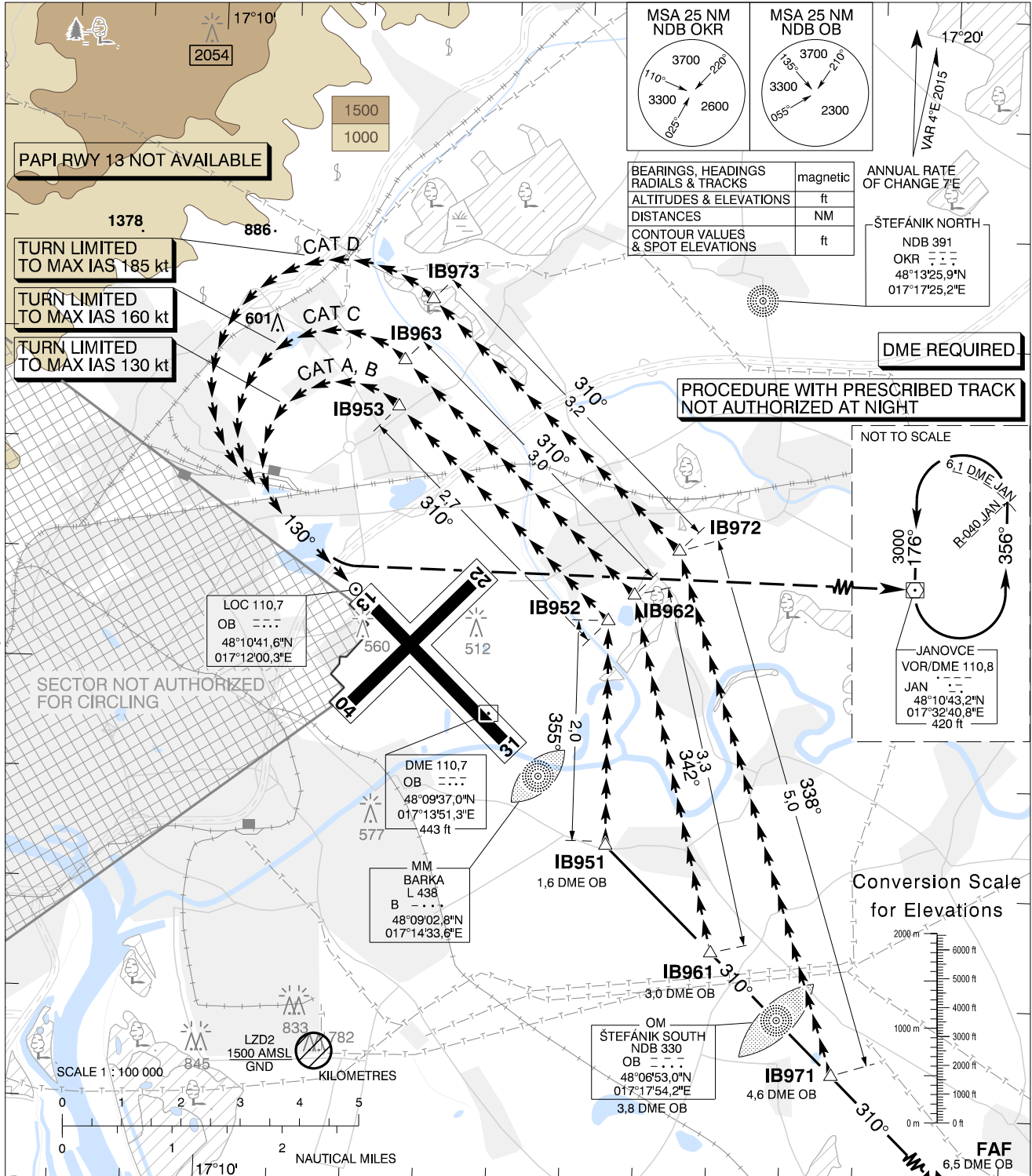
**CIRCLING
APPROACH
CHART**

TRANSITION ALTITUDE
10 000 ft

AD ELEV 436 - 16 hPa
THR RWY 13 ELEV 433 - 16 hPa

ŠTEFÁNIK RADAR 134,925 (118,975)
ŠTEFÁNIK TOWER 118,300 (118,700)
ŠTEFÁNIK ATIS ARRIVAL 133,880

**BRATISLAVA/M. R. ŠTEFÁNIK
LZIB CIRCLING
RWY 31 → 13**



MISSED APPROACH

Proceed with LEFT turn to VOR JAN climbing to 3000 AMSL and join holding.
MAX IAS as prescribed for relevant ACFT CAT until established on track to VOR JAN.

WARNING

In case of missed approach before leaving final approach track, follow instrument missed approach procedure for RWY 31.

PROCEDURE

Execute a published instrument approach procedure to circling OCA(H) for relevant ACFT CAT, proceed VISUALLY approximately onto tracks and distances given on the chart above.

OCA (OCH)	A	B	C	D
WITHOUT PRESCRIBED TRACK	ft 900 (464)	1000 (564)	1970 (1534)	2450 (2014)
WITH PRESCRIBED TRACK	ft 930 (494)		1350 (914)	1880 (1444)
MNM VISIBILITY	m 1900	2800	3700	4600

	IB951	IB952	IB953
CAT A, B	48°08'26,1"N 017°15'30,4"E	48°10'28,7"N 017°15'27,1"E	48°12'22,3"N 017°12'30,9"E
	11,7 DME JAN R-255 JAN	11,5 DME JAN R-265 JAN	13,6 DME JAN R-273 JAN
CAT C	48°07'29,1"N 017°16'58,6"E	48°10'43,2"N 017°15'47,9"E	48°12'47,6"N 017°12'34,7"E
	11,0 DME JAN R-249 JAN	11,3 DME JAN R-266 JAN	13,6 DME JAN R-275 JAN
CAT D	48°06'23,8"N 017°18'39,8"E	48°11'07,9"N 017°16'23,5"E	48°13'21,4"N 017°12'56,2"E
	10,3 DME JAN R-241 JAN	10,9 DME JAN R-268 JAN	13,5 DME JAN R-277 JAN

CHANGES: MAG VAR, flight procedures adjustment, ATIS FRECO