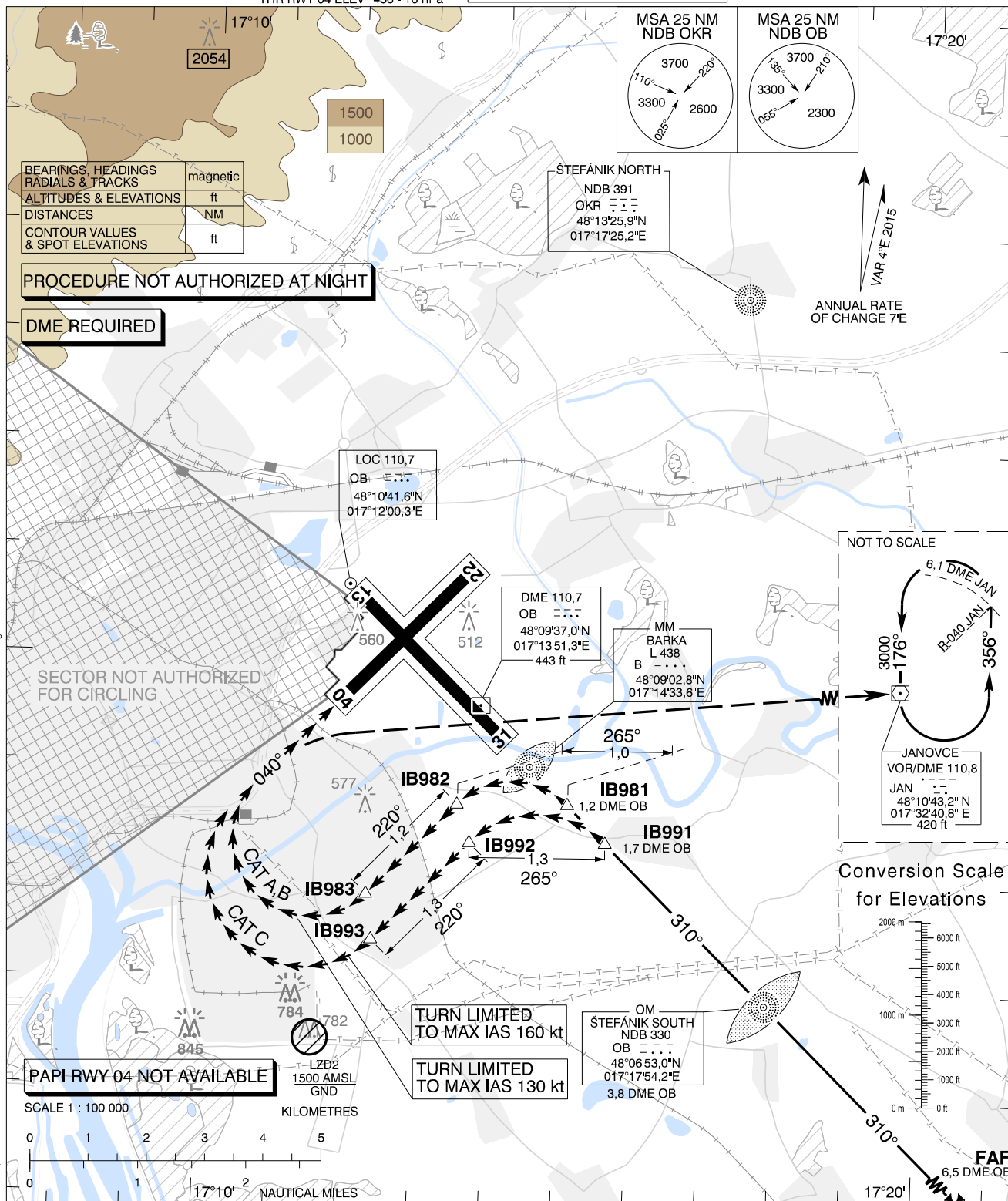


**CIRCLING  
APPROACH  
CHART**

TRANSITION ALTITUDE  
10 000 ft  
AD ELEV 436 - 16 hPa  
THR RWY 04 ELEV 436 - 16 hPa

ŠTEFÁNIK RADAR 134,925 (118,975)  
ŠTEFÁNIK TOWER 118,300 (118,700)  
ŠTEFÁNIK ATIS ARRIVAL 133,880

BRATISLAVA/M. R. ŠTEFÁNIK  
LZIB CIRCLING  
(ACFT CAT A, B, C) RWY 31 → 04



**MISSED APPROACH**  
Proceed with RIGHT turn to VOR JAN climbing to 3000 AMSL and join holding.  
MAX IAS as prescribed for relevant ACFT CAT until established on track to VOR JAN.

**PROCEDURE**  
Execute a published instrument approach procedure to circling OCA(H) for relevant ACFT CAT, proceed VISUALLY approximately onto tracks and distances given on the chart above.

**WARNING**  
In case of missed approach before leaving final approach track, follow instrument missed approach procedure for RWY 31.

OCA (OCH)	A	B	C
WITH PRESCRIBED TRACK	ft 1080 (644)	ft 1240 (804)	
MNM VISIBILITY	m 1900	m 2800	m 3700

	IB981	IB982	IB983
CAT A, B	48°08'41,9"N 017°15'05,9"E	48°08'40,8"N 017°13'34,2"E	48°07'49,7"N 017°12'20,7"E
	11,9 DME JAN R-256 JAN	13,0 DME JAN R-257 JAN	13,9 DME JAN R-254 JAN
CAT C	48°08'21,1"N 017°15'38,2"E	48°08'19,7"N 017°13'45,4"E	48°07'24,5"N 017°12'25,9"E
	11,7 DME JAN R-254 JAN	12,9 DME JAN R-255 JAN	14,0 DME JAN R-252 JAN

CHANGES: MAG VAR, flight procedures adjustment, ATIS FREQ