

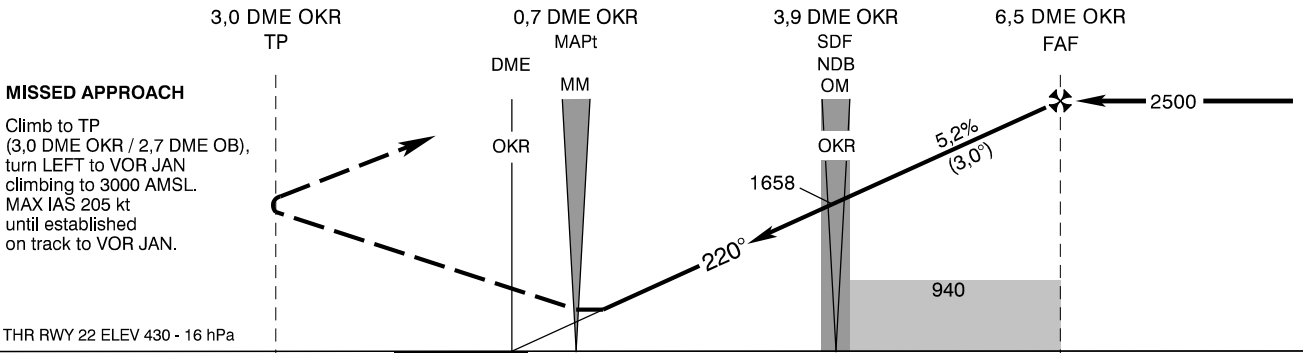
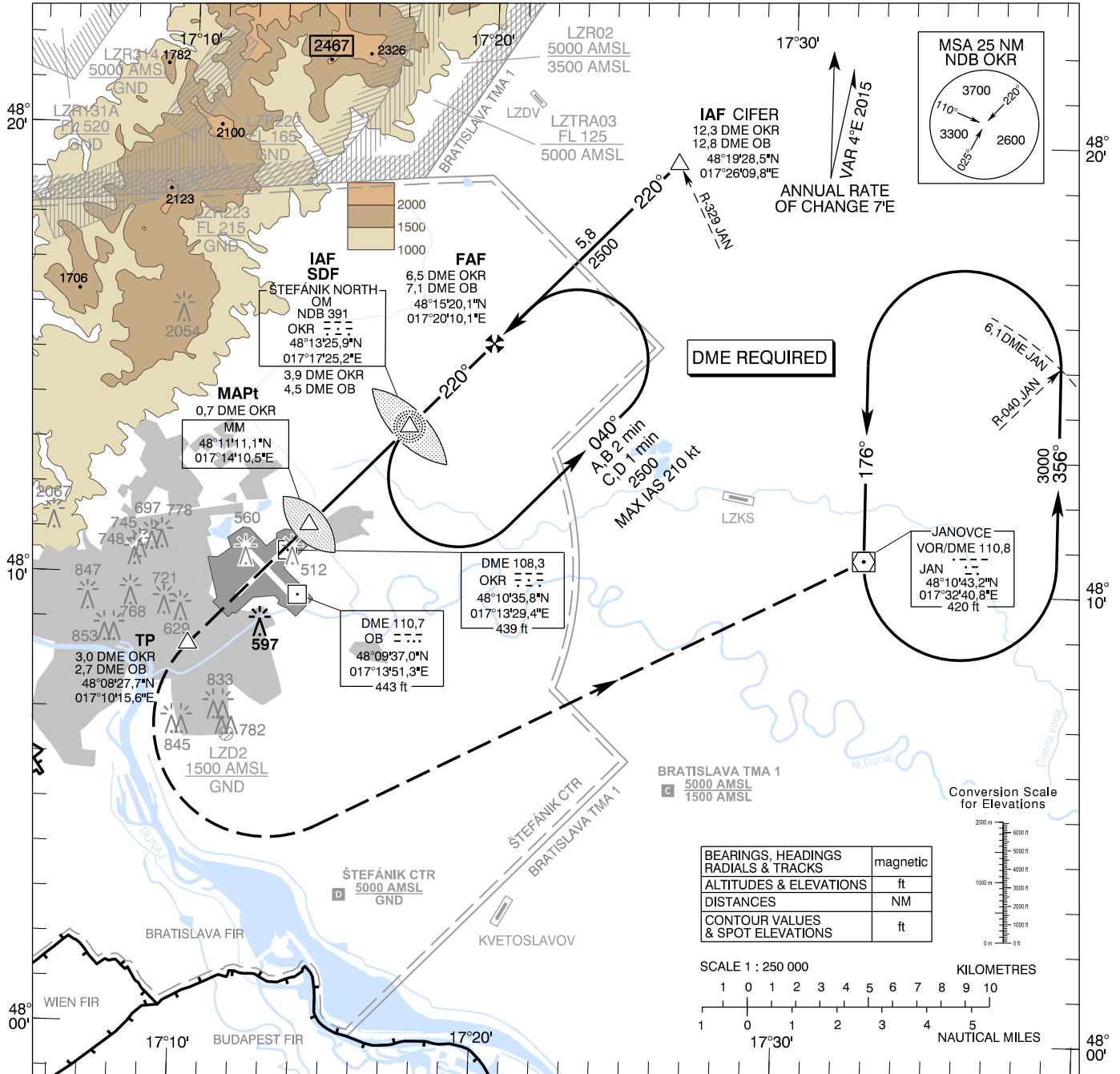
**INSTRUMENT  
APPROACH  
CHART - ICAO**

TRANSITION ALTITUDE  
10 000 ft

AD ELEV 436 - 16 hPa  
THR RWY 22 ELEV 430 - 16 hPa

ŠTEFÁNIK RADAR 134,925 (118,975)  
ŠTEFÁNIK TOWER 118,300 (118,700)  
ŠTEFÁNIK ATIS ARRIVAL 133,880

**BRATISLAVA/M. R. Štefánik (LZIB)  
NDB RWY 22  
ACFT CAT A/B/C/D**



**MISSED APPROACH**  
Climb to TP (3,0 DME OKR / 2,7 DME OB), turn LEFT to VOR JAN climbing to 3000 AMSL. MAX IAS 205 kt until established on track to VOR JAN.

THR RWY 22 ELEV 430 - 16 hPa  
NM to/from THR RWY 22

OCA (OCH)		A	B	C	D
Straight - in Approach	without SDF	ft	940 (504)		
	with SDF	ft	840 (404)		
Circling		Not authorized WEST of the Airport BTN EXTD RCL 13/31 and 04/22 See the Circling Approach Chart			

DME OKR	NM	6,0	5,0	4,0	3,0	2,0
ALTITUDES	ft	2337	2018	1700	1381	1063

Ground speed	kt	70	90	100	120	140	160	180
FAF - MAPt (5,8 NM)	min:sec	4:57	3:51	3:28	2:53	2:29	2:10	1:56
Rate of descent (5,2%)	ft/min	372	478	531	637	743	849	955

Timing not authorized for defining the MAPt

CHANGES: Štefánik CTR, Bratislava TMA 1 redesigned