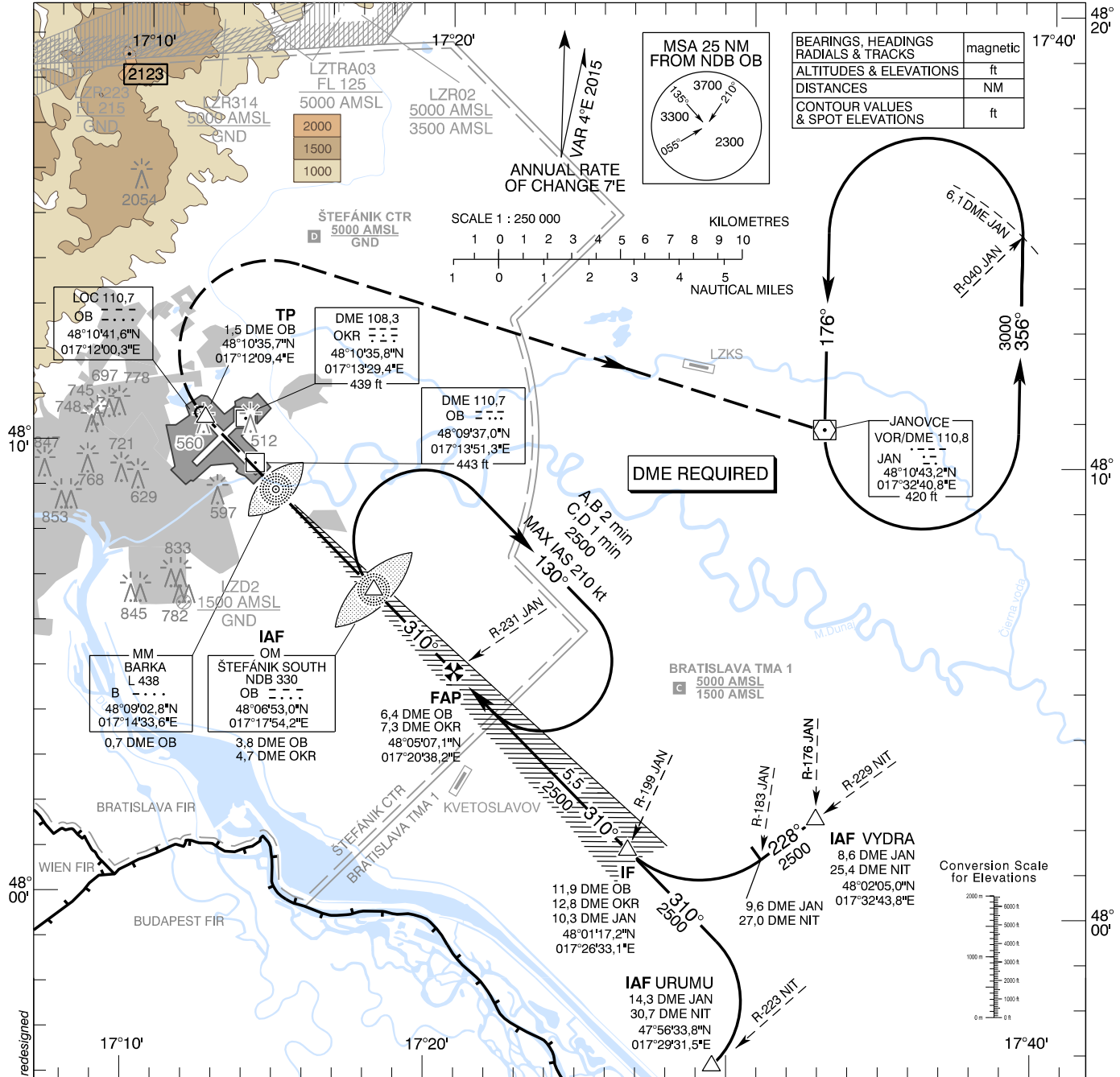


**INSTRUMENT
APPROACH
CHART - ICAO**

TRANSITION ALTITUDE
10 000 ft
AD ELEV 436 - 16 hPa
THR RWY 31 ELEV 433,7 - 16 hPa

ŠTEFÁNIK RADAR 134,925 (118,975)
ŠTEFÁNIK TOWER 118,300 (118,700)
ŠTEFÁNIK ATIS ARRIVAL 133,880

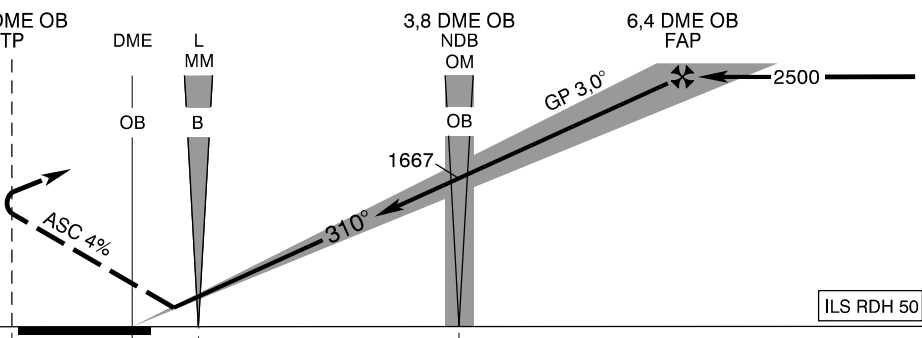
**BRATISLAVA/M. R. ŠTEFÁNIK (LZIB)
ILS CAT I ASC 4% RWY 31
ACFT CAT A/B/C/D**



MISSED APPROACH
Climb to TP (1,5 DME OB), turn RIGHT to VOR JAN climbing to 3000 AMSL. MAX IAS 185 kt until established on track to VOR JAN.

ALTERNATE MISSED APPROACH IN CASE OF DME OB UNSERVICEABLE
Climb STRAIGHT AHEAD, at 800 AMSL turn RIGHT to VOR JAN climbing to 3000 AMSL. MAX IAS 185 kt until established on track to VOR JAN. No turn before MM (L B).

THR RWY 31 ELEV 433,7 - 16 hPa
NM to/from THR RWY 31



CHANGES: DME OB distance on MM BARKA changed; Štefánik CTR, Bratislava TMA redesigned