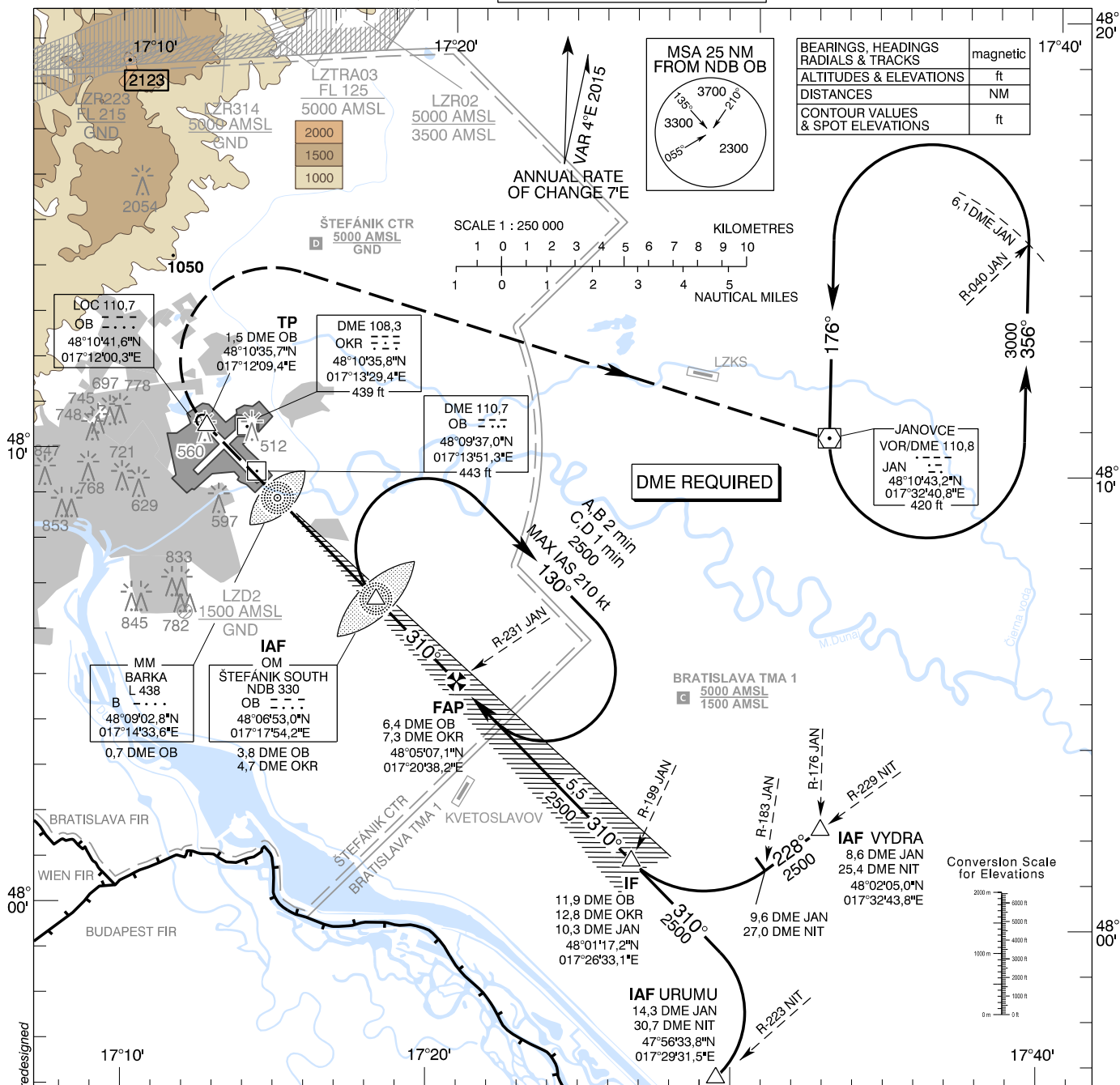


**INSTRUMENT  
APPROACH  
CHART - ICAO**

TRANSITION ALTITUDE  
10 000 ft  
AD ELEV 436 - 16 hPa  
THR RWY 31 ELEV 433,7 - 16 hPa

ŠTEFÁNIK RADAR 134,925 (118,975)  
ŠTEFÁNIK TOWER 118,300 (118,700)  
ŠTEFÁNIK ATIS ARRIVAL 133,880

**BRATISLAVA/M. R. Štefánik (LZIB)  
ILS CAT I RWY 31  
ACFT CAT A/B/C/D**



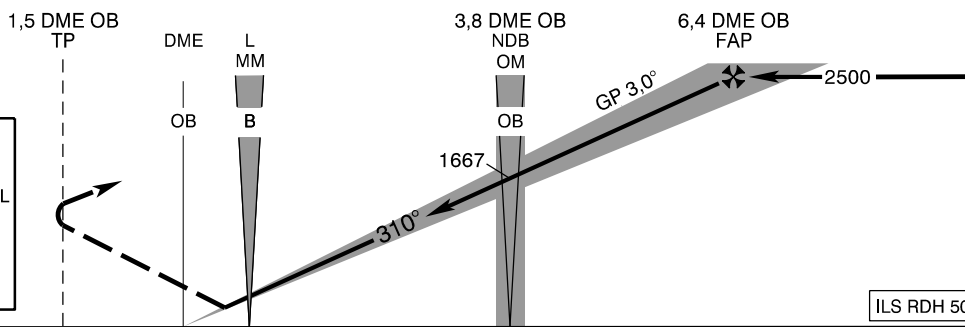
**MISSED APPROACH**

Climb to TP (1,5 DME OB),  
turn RIGHT to VOR JAN climbing to  
3000 AMSL.  
MAX IAS 185 kt until  
established on track to VOR JAN.

**ALTERNATE MISSED APPROACH  
IN CASE OF DME OB  
UNSERVICEABLE**

Climb STRAIGHT AHEAD, at 800 AMSL  
turn RIGHT to VOR JAN climbing to  
3000 AMSL.  
MAX IAS 185 kt until established  
on track to VOR JAN.  
No turn before MM (L B).

THR RWY 31 ELEV 433,7 - 16 hPa  
NM to/from THR RWY 31



OCA (OCH)		A	B	C	D
Straight - in Approach	CAT I	ft 693 (259)	705 (271)	713 (279)	724 (290)
Circling		Not authorized WEST of the Airport BTN EXT D RCL 13/31 and 04/22 See the Circling Approach Chart			

DME OB	NM	6,0	5,0	4,0	3,0	2,0
ALTITUDES	ft	2370	2042	1716	1391	1069

Ground speed	kt	70	90	100	120	140	160	180
Rate of descent (3,0°)	ft/min	372	478	531	637	743	849	955

CHANGES: DME OB distance on MM BARKA changed; Štefánik CTR, Bratislava TMA redesigned