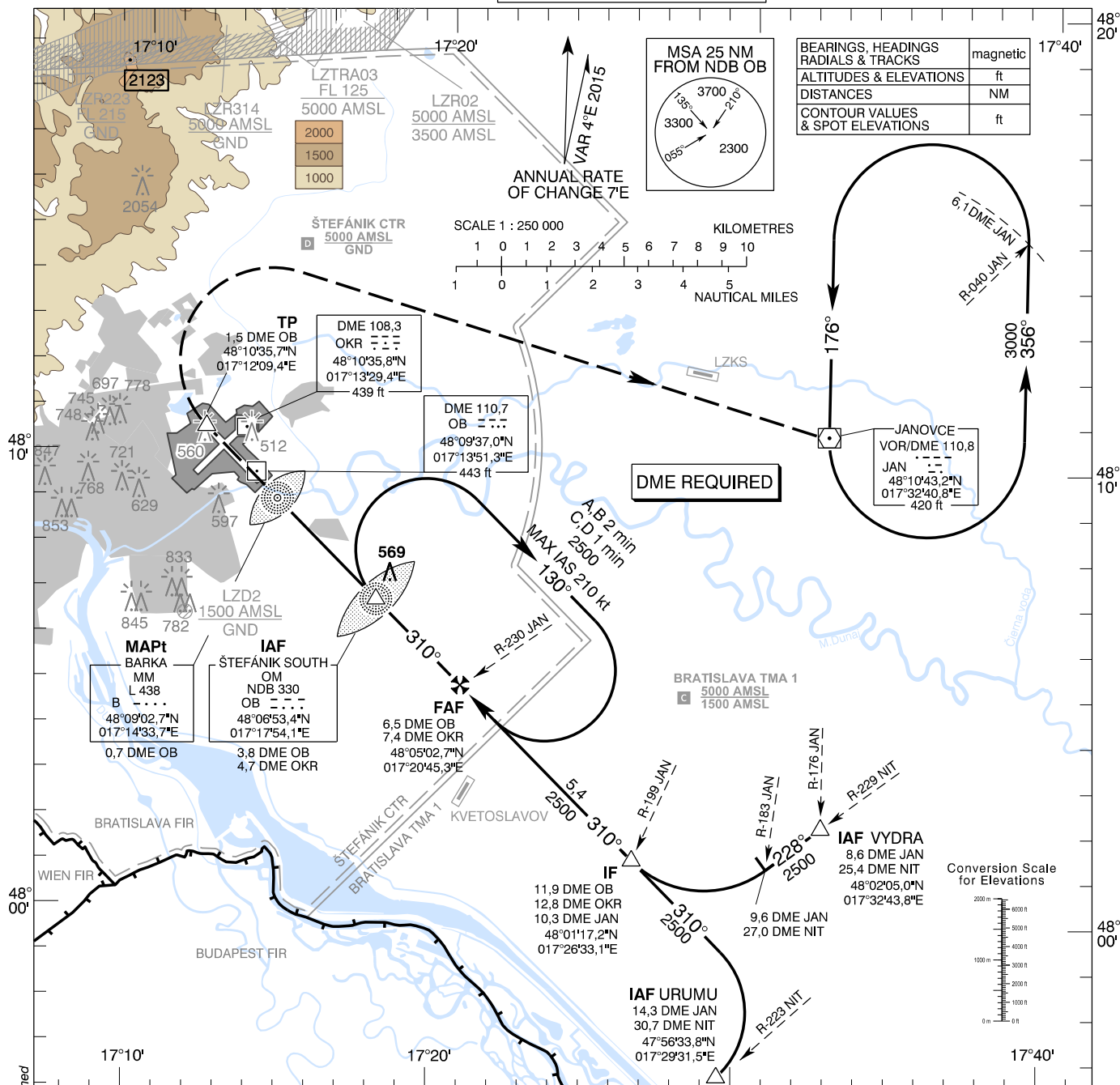


**INSTRUMENT
APPROACH
CHART - ICAO**

TRANSITION ALTITUDE
10 000 ft
AD ELEV 436 - 16 hPa
THR RWY 31 ELEV 434 - 16 hPa

ŠTEFÁNIK RADAR 134,925 (118,975)
ŠTEFÁNIK TOWER 118,300 (118,700)
ŠTEFÁNIK ATIS ARRIVAL 133,880

BRATISLAVA/M. R. Štefánik (LZIB)
NDB RWY 31
ACFT CAT A/B/C/D



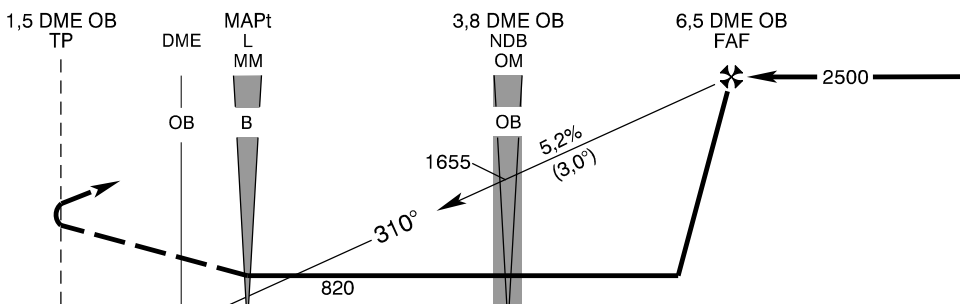
MISSED APPROACH

Climb to TP (1,5 DME OB), turn RIGHT to VOR JAN climbing to 3000 AMSL. MAX IAS 185 kt until established on track to VOR JAN.

ALTERNATE MISSED APPROACH IN CASE OF DME OB UNSERVICEABLE

At MAPt turn RIGHT to VOR JAN climbing to 3000 AMSL. MAX IAS 185 kt until established on track to VOR JAN.

THR RWY 31 ELEV 434 - 16 hPa
NM to/from THR RWY 31



OCA (OCH)		A	B	C	D
Straight - in Approach	ft	820 (384)			
Circling		Not authorized WEST of the Airport BTN EXTD RCL 13/31 and 04/22 See the Circling Approach Chart			

DME OB	NM	6.0	5.0	4.0	3.0	2.0
ALTITUDES	ft	2340	2021	1703	1384	1066

Ground speed	kt	70	90	100	120	140	160	180
FAF - MAPt (5,8 NM)	min:sec	4:57	3:51	3:28	2:53	2:28	2:10	1:55
Rate of descent (5,2%)	ft/min	372	478	531	637	743	849	955

Timing not authorized for defining the MAPt

CHANGES: DME OB distance on MAPt changed; Štefánik CTR, Bratislava TMA redesigned